



# ***NanoTrader***

## ***SynergyTrading***

Document Version 1.6

[www.fipertec.com](http://www.fipertec.com)



## Content

|     |  |    |
|-----|--|----|
| 1   | What is SynergyTrading? .....                              | 3  |
| 2   | Getting Started .....                                      | 3  |
| 2.1 | Create a trader profile .....                              | 3  |
| 2.2 | Joining a group .....                                      | 5  |
| 3   | Group Trading .....  | 7  |
| 3.1 | Entering a Group Trading Room .....                        | 7  |
| 3.2 | Subscribing to Accounts .....                              | 9  |
| 3.3 | Data Displayed by the Group Trading App .....              | 9  |
| 3.4 | Data Views .....   | 10 |
| 3.5 | Chat .....   | 12 |
| 3.6 | Group Activities .....                                     | 14 |
| 3.7 | Display of Position and Order Information in a Chart ..... | 16 |
| 3.8 | Description of available Data Columns .....                | 19 |
| 3.9 | Setting Various Options .....                              | 23 |

## 1 What is SynergyTrading?

SynergyTrading is a brand new infrastructure provided by Fipertec that uses the latest technology in network communications to create synergies amongst individual traders. SynergyTrading is seamlessly integrated into NanoTrader and thus provides a unique experience in joining forces and expertise with like-minded other traders without the hassle of reverting to non-integrated applications, such as Skype or screen sharing programs.

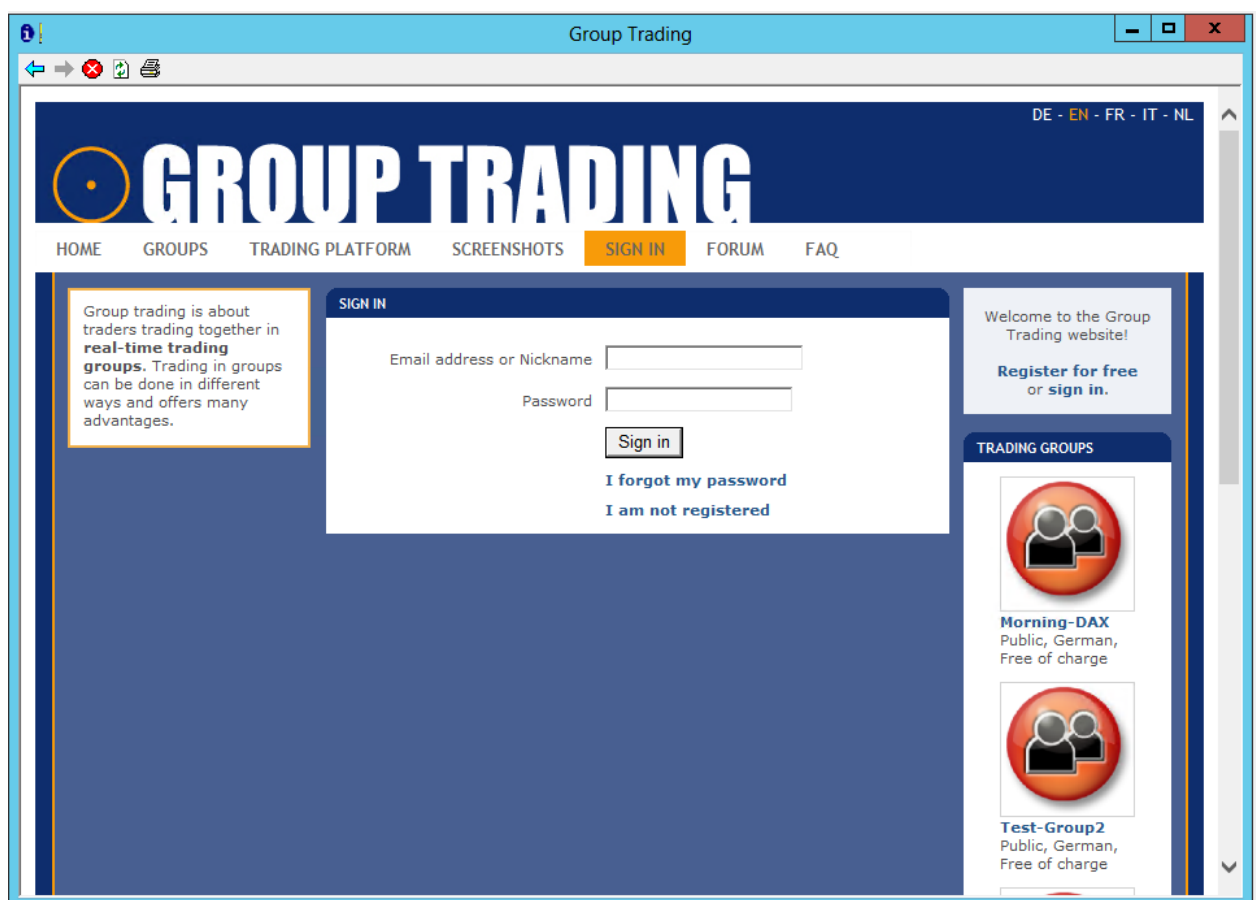
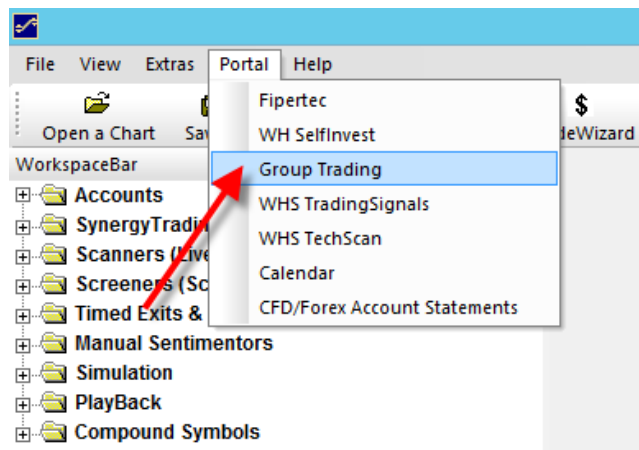
In essence SynergyTrading enables users to publish orders, positions, accounts, structured ratings, and chat messages to other users which belong to the same group. This basic information is enriched and presented directly in NanoTrader by so-called *apps*. Each app is specialized for a specific purpose. The premier app, described in detail in this document, is called *Group Trading*. It focuses on supporting a "group of equals" in their individual trading activities. Other apps to be released in the near future include:

- **GuruTrading**  
A group leader publishes his orders, trades and comments to the group. Trades can be shown easily in a chart of the member. Members can follow orders of the Guru manually or automatically.
- **Coaching**  
A coach sees all order activities of his students and can monitor their accounts.
- **LiveSignals**  
A provider scans various symbols for new signals and broadcasts them instantly.
- **TradingMatch**  
This exciting app allows traders or groups of traders to compete against each other. Join predefined matches or setup your own rules and invite others. A TradingMatch can last only some hours or even days.

## 2 Getting Started

### 2.1 Create a trader profile

To use Group Trading you need a trader profile and a monthly subscription of the Nano trading platform. Then you can join existing groups and start your own group. From the main menu choose Portal | Group Trading:



Click on I am not registered complete the form.

**REGISTER**

By registering as a trader you can join existing trading groups and start your own.

Registration is **free**.

**Nickname**

**Email address**

Confirm email address


**Password (6-20 characters)**

Confirm password

Trader image    
(jpg/png, size 100 x 100 pixel)

**My trading style can best be described as**

↑  
↓

Security code  

When you are opening the Group Trading website from inside Nano the next time you are automatically logged into your trader profile.


## 2.2 Joining a group

SynergyTrading is organized around *groups* and *apps*. A group is a collection of users administered by your broker or by specifically permissioned members of that group. A group uses at least one app for its activities. Once a group is established the required apps are started on a server of your broker. Each group occupies a so-called *room* in a given app to separate it from other groups using the same app.

On the Group Trading website you can browse through the collection of existing groups. By clicking on the image or the name of a group you can open a page showing detailed information. When you decided to join the group click on Join the group.

GROUP "ForexTrading"

Logo of the group



Group administrator

The group is Public

Maximum number of members 10

Number of members 0

Language(s) in the group German

Minimum experience required Beginner

Time(s) when group meets Every day 08:00-21:59

Products the group trades CFD  
Futures

Instruments the group trades Indices: DAX, CAC, DOW, AEX, etc.

Trading time frame(s) 5 minutes

Our trading style can best be described as We risk everything. All in is our style. If we are not winning, we are loosing. Cool!

What this group offers

Monthly subscription Free

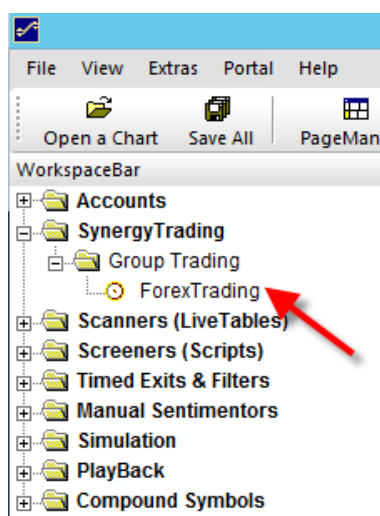
Manage your membership

Join the group

Back

Then the administrator of the group receives a notification about your request. After he processed your request you will be notified about his decision. When he accepted you as a member you can press F5 to refresh the list of apps and rooms that are accessible for you.

The WorkspaceBar shows the apps and rooms that are accessible for you:



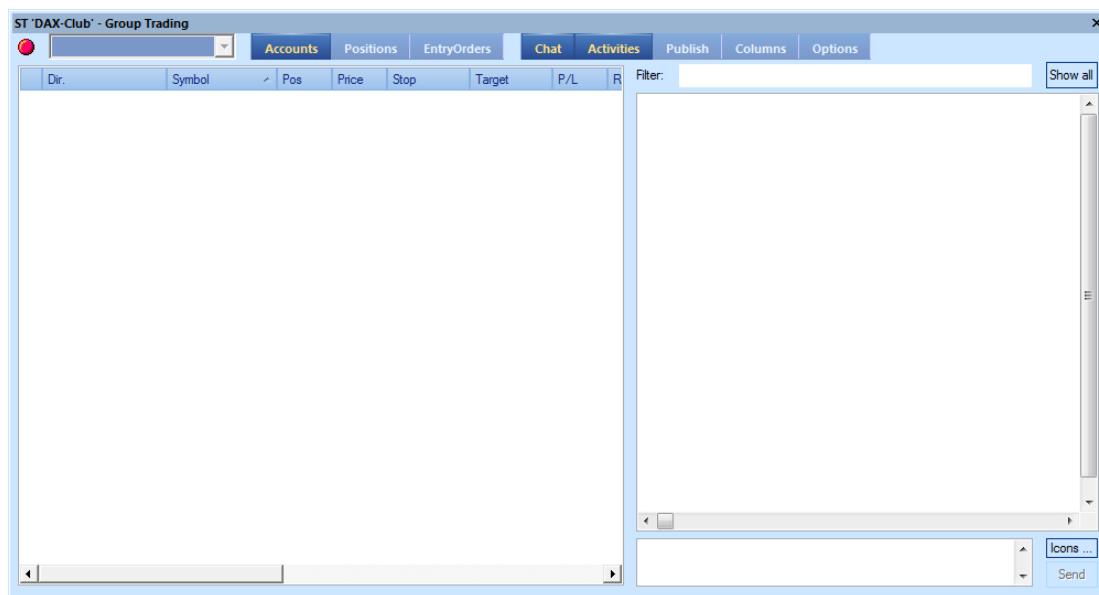
In the above example the user is member of the group "ForexTrading" providing a room in the Group Trading App.

To enter a room double click its name.

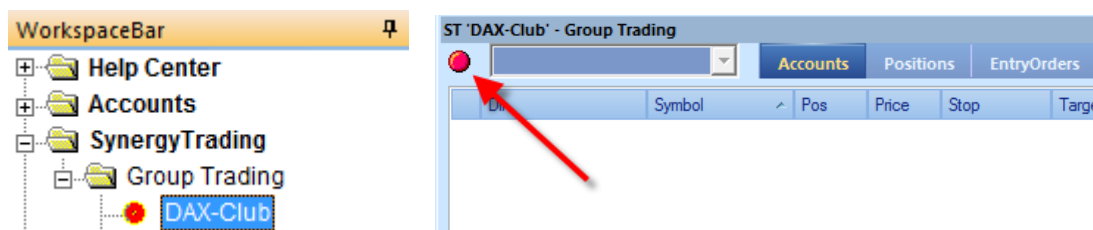
### 3 Group Trading

#### 3.1 Entering a Group Trading Room

When doubleclicking a room of the Group Trading App in the WorkspaceBar the Group Trading Bar will appear:

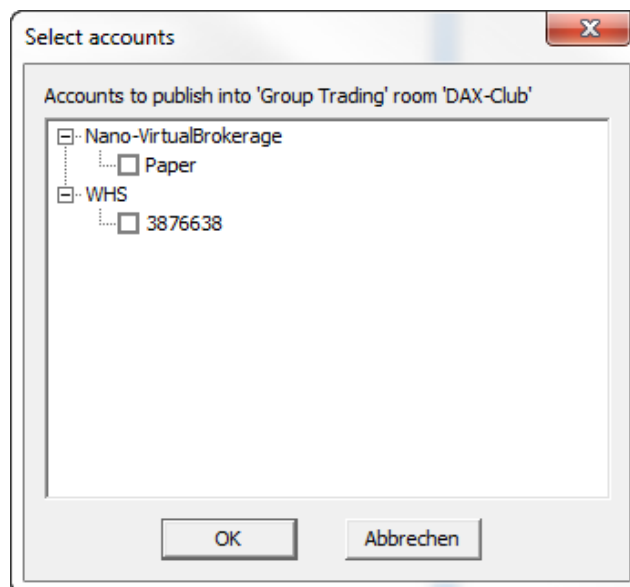


The connection status of the room is displayed in the Group Trading Bar and in the WorkspaceBar:



Initially you are not connected to the room. Group Trading is about publishing your account and you might want to prepare the account somehow prior to show it to your group.

To connect, click the red connection status indicator. The Select Accounts dialog will appear showing your currently opened accounts:

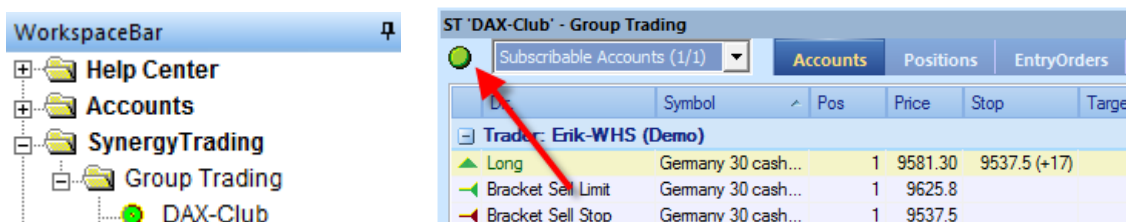


In order to connect to the Group Trading App you are required to publish at least one account. You are free though to publish multiple accounts. Depending on the settings of your group you might only be allowed to publish live accounts, i.e., no PaperTrade accounts or accounts being connected to a test environment.

The Select Accounts dialog shows only accounts that have previously been opened.

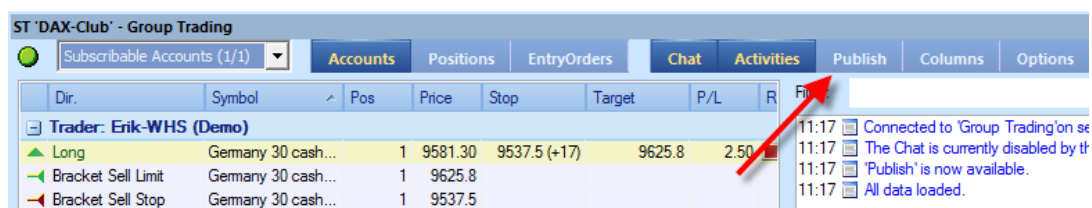
It is possible to publish the same account into multiple Group Trading rooms.

Checkmark the account(s) to be published and click OK. The app will connect and display its new connection status:



The AppBars are saved and restored by NanoTrader's PageManager. Note that if you load a page that does not contain a currently opened AppBar then this AppBar is hidden but it is still connected. Hence, you will still receive all updates of the corresponding app and will still publish your activities. Check the connection indication in the WorkspaceBar if you are unsure about the current connection status.

At any time you can change the selection of published accounts by clicking the Publish button:





The background color of a published account is changed to a light yellow to always remind you that the account can be seen by your group members:

| Name        | Buy | Sell | Exit | Position | Traded | Last   | P/L  | Cum. P/L | Study                  | State | Bid    |
|-------------|-----|------|------|----------|--------|--------|------|----------|------------------------|-------|--------|
| FDAX JUN 14 | Buy | Sell | Exit | 0        | n/a    | 9572.5 | 0.00 | n/a      | TradeGuard: not loa... |       | 9572.0 |

At the bottom, it shows: Bal.: EUR 383,449.97 P/L: 0.00. There are also buttons for Positions, Working Orders, and Completed Orders.

## 3.2 Subscribing to Accounts

Group Trading is showing trading activities of group members that they conduct in their published accounts. By default you are automatically subscribed to all published accounts of your group members. You can change your subscriptions by clicking on Subscribable Accounts and checking/unchecking the accounts.

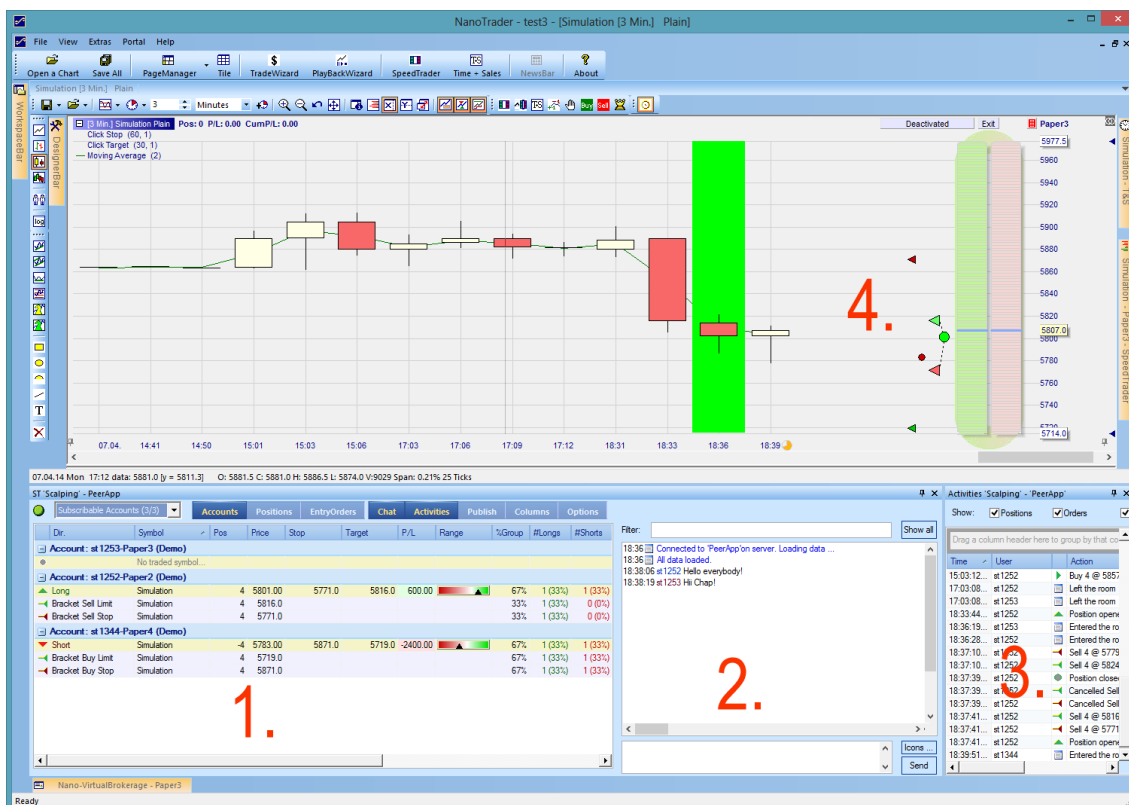
| ST 'DAX-Club' - Group Trading       |                    |           |             |              |
|-------------------------------------|--------------------|-----------|-------------|--------------|
| Subscribable Accounts (2/2)         |                    |           |             |              |
|                                     | Accounts           | Positions | EntryOrders |              |
| <input checked="" type="checkbox"/> | Erik-Paper (Demo)  |           | Pos         | Price        |
| <input checked="" type="checkbox"/> | Erik-WHS (Demo)    |           | Stop        | Target       |
| Trader: Erik-Paper (Demo)           |                    |           |             |              |
| No traded symbol...                 |                    |           |             |              |
| Trader: Erik-WHS (Demo)             |                    |           |             |              |
| Long                                | Germany 30 cash... | 1         | 9581.30     | 9537.5 (+17) |
| Bracket Sell Limit                  | Germany 30 cash... | 1         | 9625.8      |              |
| Bracket Sell Stop                   | Germany 30 cash... | 1         | 9537.5      |              |

The Group Trading App will aggregate certain information of the group members, i.e., how many members are long or short in a given instrument. All group related information is based on your subscribed accounts, not on the totality of the connected members.

You can disable the automatic subscription to accounts in the Options.

## 3.3 Data Displayed by the Group Trading App

The Group Trading App displays a multitude of information. These are divided into four main categories:



1. Customizable tabular data displayed in a report. The report contains three pre-configured selections of the available columns called views.
2. Chat messages, either general or related to a particular position or order.
3. Customizable list of activates of all group members (not just of those accounts you are subscribed to).
4. Display of position and order information in a chart.

### 3.4 Data Views

The Group Trading App offers three predefined selections of columns to be displayed in the report in section 1 as shown above. Each view focuses on a specific informational aspect. The column selection, ordering etc. are fully customizable as described below. The detailed meaning of the displayed data is discussed in a subsequent section.

#### Accounts View

The “Accounts” view shows a list of all positions, orders and recently traded instruments of the published accounts from the group members you are subscribed to. It is similar to the AccountBar showing a regular trading account, hence the name, but it adds a lot of information. Note that you cannot trade directly from here.

Your own published accounts are always displayed at the top of the “Accounts” view. This allows easy access to various features that are only available to the account's owner. Also you always see exactly how your group members will see your account.

| Dir.                      | Symbol             | Pos | Price   | Stop         | Target | P/L   | Range | %Group | #Longs  | #Shorts | Facts | Hints | Likes | Disl... | Chat |
|---------------------------|--------------------|-----|---------|--------------|--------|-------|-------|--------|---------|---------|-------|-------|-------|---------|------|
| No traded symbol...       |                    |     |         |              |        |       |       |        |         |         |       |       |       |         |      |
| Trader: Erik-Paper (Demo) |                    |     |         |              |        |       |       |        |         |         |       |       |       |         |      |
| Long                      | Germany 30 cash... | 1   | 9581.30 | 9537.5 (+17) | 9625.8 | -1.70 |       | 50%    | 1 (50%) | 0 (0%)  |       | 0 0 0 |       |         |      |
| Bracket Sell Limit        | Germany 30 cash... | 1   | 9625.8  |              |        |       |       | 50%    | 1 (50%) | 0 (0%)  |       |       |       |         |      |
| Bracket Sell Stop         | Germany 30 cash... | 1   | 9537.5  |              |        |       |       | 50%    | 1 (50%) | 0 (0%)  |       |       |       |         |      |

## Positions View

The "Positions" view shows only existing positions and omits all orders. However, if a position has bracket orders attached their price levels are also displayed. Using the "Positions" view you get an instant overview about what's going on in your group. Also, various graphical displays show the current status of trades as they relate to their bracket orders. This allows to easily spot interesting trades that you want to hook on to.

| Dir. | Symbol             | P/L   | PotProfit | Pos | RRR  | Range | Stop         | Target | Age      | %Group | #Longs  | #Shorts | Hints | Chart | Copy | LongEvi |
|------|--------------------|-------|-----------|-----|------|-------|--------------|--------|----------|--------|---------|---------|-------|-------|------|---------|
| Long | Germany 30 cash... | -1.00 | 44.50     | 1   | 1.02 |       | 9537.5 (+17) | 9625.8 | 00:10:47 | 50%    | 1 (50%) | 0 (0%)  |       |       |      |         |

## EntryOrders View

Often times you watch out for new trading opportunities. The "EntryOrders" view will show you only those orders of your subscribed to group members that are meant to open a new position or to increase an existing position.

If the order has "contingent bracket orders" attached, as possible in CFD/Forex trading, then their prices are also displayed. The combination of entry price and bracket prices gives a good insight into the envisioned trade.

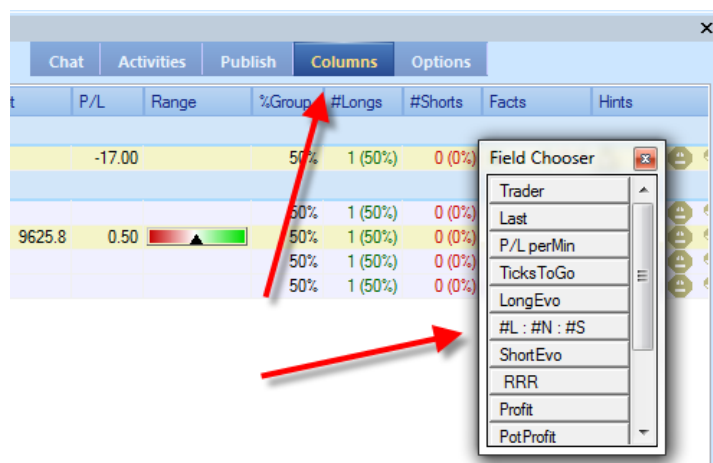
| Dir.            | Symbol              | Pos   | Price   | Last    | Age      | #Longs | #Shorts | Trader          | Hints | Likes | Disl... | Chat |
|-----------------|---------------------|-------|---------|---------|----------|--------|---------|-----------------|-------|-------|---------|------|
| Enter Long Stop | Euro-US Dollar Spot | 10... | 1.31880 | 1.31780 | 00:00:39 | 0 (0%) | 0 (0%)  | Erik-WHS (Demo) |       |       |         |      |

## Customizing the Views

The views are fully customizable so you can arrange everything to your liking.

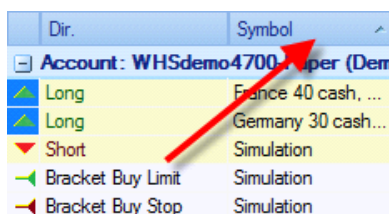
Use drag and drop in the column heading to reorder the positions of the shown columns.

By clicking on "Columns" you can open the Field Chooser showing a list of available columns currently not used in the selected view.



Drag an item from the “Field Chooser” and drop it onto the view heading at the position you want to insert the new item. If you want to remove a column from the view drag it from the view and drop it onto the “Field Chooser”.

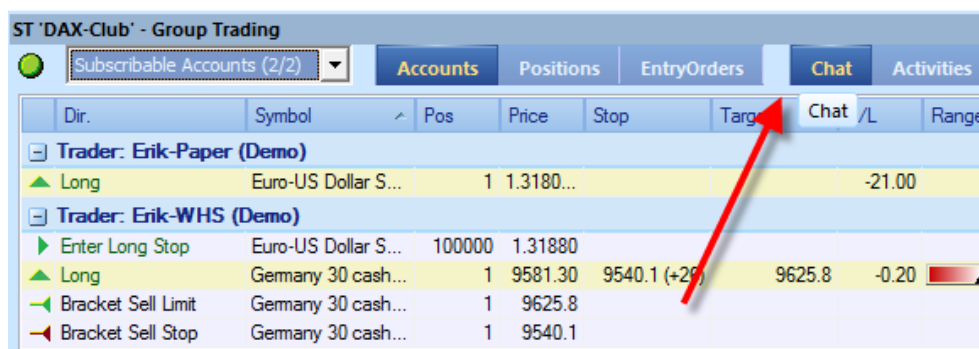
Clicking on the title of a column activates ascending sorting of its data. With another click you can switch to descending sort mode. Clicking again will deactivate sorting.



It is possible to activate sorting for multiple columns. In this case the sorting is done by each column from the left to the right. Use drag and drop to move a column to the left if you want its sorting to have precedence.

### 3.5 Chat

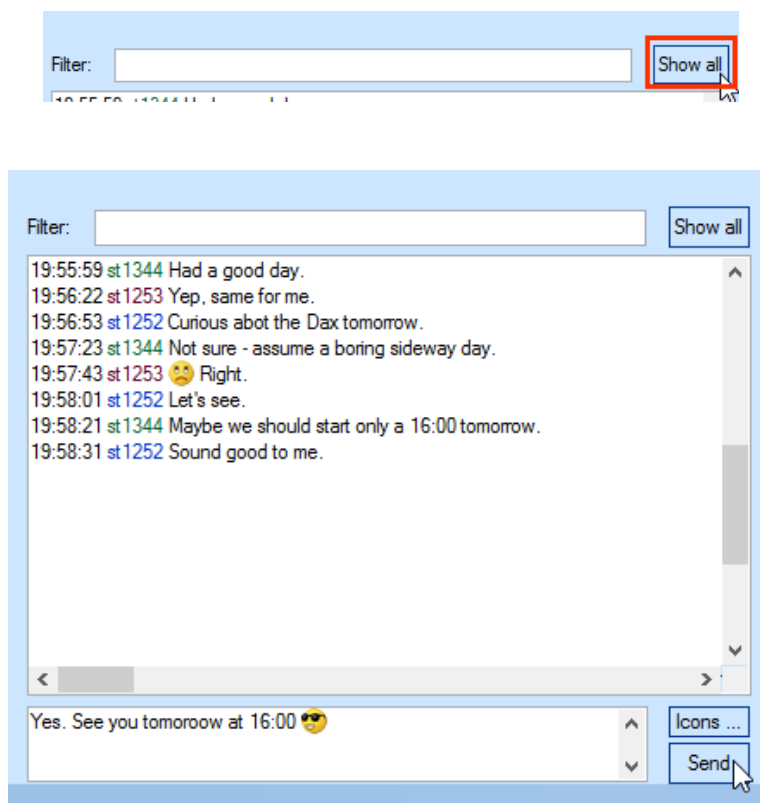
Use the Chat button to show or hide the chat pane in the Group Trading Bar.



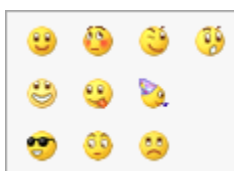
The chat can be used for a normal chat amongst the group members. Moreover it allows to discuss specifically a position or and order.

## Chat with all Group Members

To view the general chat messages click the Show all button in the chat pane. This will clear a potential filter:



Enter your message, add icons by entering the usual shortcuts such as :) or ;) or click the Icons button to choose one of the available icons:



Press Enter or click Send to submit the message. To add a line break into the message use Ctrl+Enter.

## Chat on a Position or Order

Often times you want to exchange about a specific position or order. To do so just click the Chat cell of that item in the report:

| Dir.                              | Symbol     | Pos | Price   | Stop   | Target | P/L    | Range | Chat            | %Group | #Longs   | #Shorts | PotProfit | Facts |
|-----------------------------------|------------|-----|---------|--------|--------|--------|-------|-----------------|--------|----------|---------|-----------|-------|
| Account: WHSdemo4700-Paper (Demo) |            |     |         |        |        |        |       |                 |        |          |         |           |       |
| Long                              | Simulation | 1   | 5865.00 | 5709.5 | 5916.5 | 325.00 |       | 09:18:02joachim | 100%   | 1 (100%) | 0 (0%)  | 962.50    | 0 0   |
| Bracket Sell Limit                | Simulation | 1   | 5916.5  |        |        |        |       |                 | 100%   | 1 (100%) | 0 (0%)  |           |       |
| Bracket Sell Stop                 | Simulation | 1   | 5709.5  |        |        |        |       |                 | 100%   | 1 (100%) | 0 (0%)  |           |       |

The chat filter will be set to the clicked item and the chat window will only show messages for that item. In addition to the text messages from users all changes of the position or order will also be displayed automatically by NanoTrader.

The chat about a position of a member stays alive even if the position is closed. This way you have a complete history of actions including all discussions relating to a symbol traded by the group member.

The Chat cell in the report will always show the last received message related to the respective order or position. It will also highlight for a while if it receives a new entry. Hover the mouse over a Chat cell and a condensed list of the messages is pop up:

| Accounts | Positions | EntryOrders | Chat    | Activities | Publish | Columns  | Options |
|----------|-----------|-------------|---------|------------|---------|--|---------|
| Pos      | Stop      | Target      | P/L     | Price      | Range   | Chat   |         |
| Demo)    |           |             |         |            |         |  |         |
| 0        |           |             |         | 0.00       |         | 12:13:51 st1252 Lucky you.   |         |
| -4       |           |             | -100.00 | 5878.50    |         | <div> 12:16:40 st1252 Definitely.<br/> 12:12:37 joachimStTest Hmm, I would go long<br/> 12:13:04 st1252 No way. Today is down day.<br/> 12:16:30 joachimStTest You'll see.<br/> 12:16:40 st1252 Definitely. </div> |         |

### 3.6 Group Activities

All actions of all connected group members are shown in the ActivitiesBar. This Bar can be shown or hidden by clicking the Activities button:

| ST 'DAX-Club' - Group Trading |          |           |              |        |            |        |         |         |  |
|-------------------------------|----------|-----------|--------------|--------|------------|--------|---------|---------|--|
| Subscribable Accounts (2/2)   | Accounts | Positions | EntryOrders  | Chat   | Activities |        |         |         |  |
| Pos                           | Price    | Stop      | Target       | P/L    | Range      | %Group | Longs   | #Shorts |  |
| Dollar S...                   | 1        | 1.3180... |              | -21.00 |            | 50%    | 1 (50%) | 0 (0)   |  |
| Dollar S...                   | 100000   | 1.31880   |              |        |            | 50%    | 1 (50%) | 0 (0)   |  |
| 30 cash...                    | 1        | 9581.30   | 9540.1 (+26) | 9625.8 | 4.80       | 50%    | 1 (50%) | 0 (0)   |  |
| 30 cash...                    | 1        | 9625.8    |              |        |            | 50%    | 1 (50%) | 0 (0)   |  |
| 30 cash...                    | 1        | 9540.1    |              |        |            | 50%    | 1 (50%) | 0 (0)   |  |

Activities 'DAX-Club' - 'Group Trading'

Show ☒ Positions ☒ Orders ☒ Member in/out

Drag a column header here to group by that column.

| Time        | User | Action                       | Symbol              | Trader            |
|-------------|------|------------------------------|---------------------|-------------------|
| 11:14:15... | Erik | Entered the room             |                     |                   |
| 11:14:25... | Erik | Left the room                |                     |                   |
| 11:17:31... | Erik | Entered the room             |                     |                   |
| 11:24:14... | Erik | Left the room                |                     |                   |
| 11:24:15... | Erik | Entered the room             |                     |                   |
| 11:25:32... | Erik | Position opened: 1 of        | Euro-US Dollar S... | Erik-Paper (Demo) |
| 11:35:41... | Erik | Position closed: 1 of        | Euro-US Dollar S... | Erik-Paper (Demo) |
| 11:35:44... | Erik | Position opened: 1 of        | Euro-US Dollar S... | Erik-Paper (Demo) |
| 11:35:48... | Erik | Position reversed. Volume -1 | Euro-US Dollar S... | Erik-Paper (Demo) |

The ActivitiesBar can be positioned independently of the Group Trading Bar.

Even if you are not subscribed to the accounts of certain members the ActivitiesBar will still display their activities. That way you have a precise overview of what goes on in your group. Moreover, a member's account might become interesting because a new position was entered, so you want to subscribe to that member.

Note that activities are only published if the user is connected, i.e., orders that are executed while not being connected are not reported.

Use the checkboxes at the top to filter certain message types, i.e., you might only be interested in position changes:

Activities 'DAX-Club' - 'Group Trading'

Show ☒ Positions ☒ Orders ☐ Member in/out

Drag a column header here to group by that column.

| Time        | User | Action                       | Symbol              | Trader            |
|-------------|------|------------------------------|---------------------|-------------------|
| 11:25:32... | Erik | Position opened: 1 of        | Euro-US Dollar S... | Erik-Paper (Demo) |
| 11:35:41... | Erik | Position closed: 1 of        | Euro-US Dollar S... | Erik-Paper (Demo) |
| 11:35:44... | Erik | Position opened: 1 of        | Euro-US Dollar S... | Erik-Paper (Demo) |
| 11:35:48... | Erik | Position reversed. Volume -1 | Euro-US Dollar S... | Erik-Paper (Demo) |

Also, you can easily apply sorting and multi sorting by clicking the column headers.

To group the entries, e.g., by account, drag the Account header into the grey field just above it:

Activities 'DAX-Club' - 'Group Trading'

Show ☒ Positions ☒ Orders ☐ Member in/out

Drag a column header here to group by that column.

| Time        | User | Action                         | Symbol              | Trader            |
|-------------|------|--------------------------------|---------------------|-------------------|
| 11:25:32... | Erik | ▲ Position opened: 1 of        | Euro-US Dollar S... | Erik-Paper (Demo) |
| 11:35:41... | Erik | ● Position closed: 1 of        | Euro-US Dollar S... | Erik-Paper (Demo) |
| 11:35:44... | Erik | ▲ Position opened: 1 of        | Euro-US Dollar S... | Erik-Paper (Demo) |
| 11:35:48... | Erik | ▼ Position reversed. Volume -1 | Euro-US Dollar S... | Erik-Paper (Demo) |
| 11:46:33... | Erik | ▲ Position opened: 1 of        | Euro-US Dollar S... | Erik-WHS (Demo)   |
| 11:46:42... | Erik | ▼ Position reversed. Volume -1 | Euro-US Dollar S... | Erik-WHS (Demo)   |

Activities 'DAX-Club' - 'Group Trading'

Show ☒ Positions ☒ Orders ☐ Member in/out

Trader

| Time                             | User | Action                         | Symbol              | Trader            |
|----------------------------------|------|--------------------------------|---------------------|-------------------|
| <b>Trader: Erik-Paper (Demo)</b> |      |                                |                     |                   |
| 11:25:32...                      | Erik | ▲ Position opened: 1 of        | Euro-US Dollar S... | Erik-Paper (Demo) |
| 11:35:41...                      | Erik | ● Position closed: 1 of        | Euro-US Dollar S... | Erik-Paper (Demo) |
| 11:35:44...                      | Erik | ▲ Position opened: 1 of        | Euro-US Dollar S... | Erik-Paper (Demo) |
| 11:35:48...                      | Erik | ▼ Position reversed. Volume -1 | Euro-US Dollar S... | Erik-Paper (Demo) |
| <b>Trader: Erik-WHS (Demo)</b>   |      |                                |                     |                   |
| 11:46:33...                      | Erik | ▲ Position opened: 1 of        | Euro-US Dollar S... | Erik-WHS (Demo)   |
| 11:46:42...                      | Erik | ▼ Position reversed. Volume -1 | Euro-US Dollar S... | Erik-WHS (Demo)   |

### 3.7 Display of Position and Order Information in a Chart

The Group Trading App allows to visualize positions and orders directly in a chart. Also bracket orders are specifically pointed out.

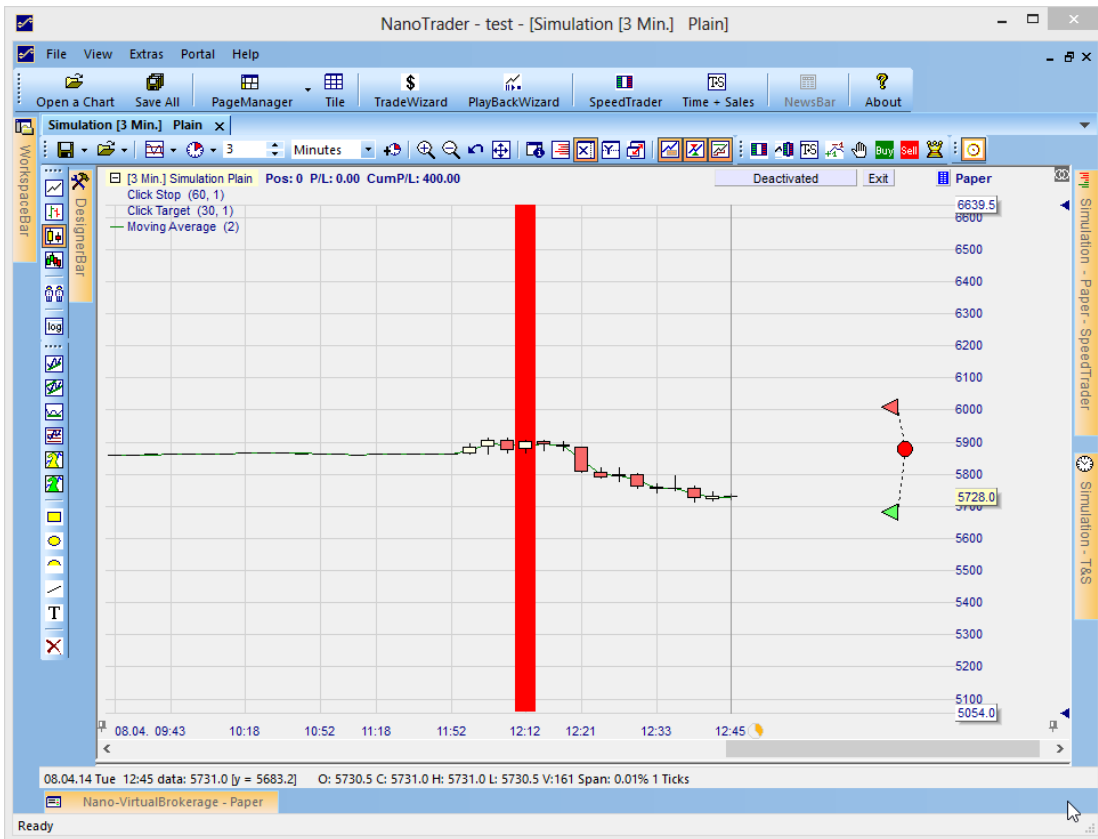
The easiest way to show a specific position or order in a chart is to click on its Chart cell:

| Accounts | Positions | EntryOrders | Chat | Activities | Publish | Columns       | Options |
|----------|-----------|-------------|------|------------|---------|---------------|---------|
| Pos      | P/L       | PotProfit   | RRR  | Range      | Stop    | Target        | Chart   |
| -4       | 14200...  | 5500.00     | 5.12 |            | 5917.0  | 5681.5 (-119) | Chart   |

Plain [Ticks - loads 0 days]  
Studies of this Security  
Template Studies

This will show a menu containing already opened studies for the underlying symbol as well as studies that could be opened. Click on the desired study to open it:





You see the member's short position (red circle) as well as related bracket orders. The bracket orders are connected to the position they are protecting by the dashed lines.

The chart will show all positions and orders of all members you are subscribed to from all Group Trading rooms you are connected to.

To make this info as clear as possible, the display distinguishes between long and short positions and buy and sell orders. Each of them is displayed in its own strip:



*Strip 1: buy orders*

limit buy = green triangle, stop buy = green triangle

bracket limit buy = light green triangle, bracket stop buy = light red triangle

*Strip 2: short positions*  
red circle

*Strip 3: sell orders*

limit sell = red triangle, stop sell = red triangle

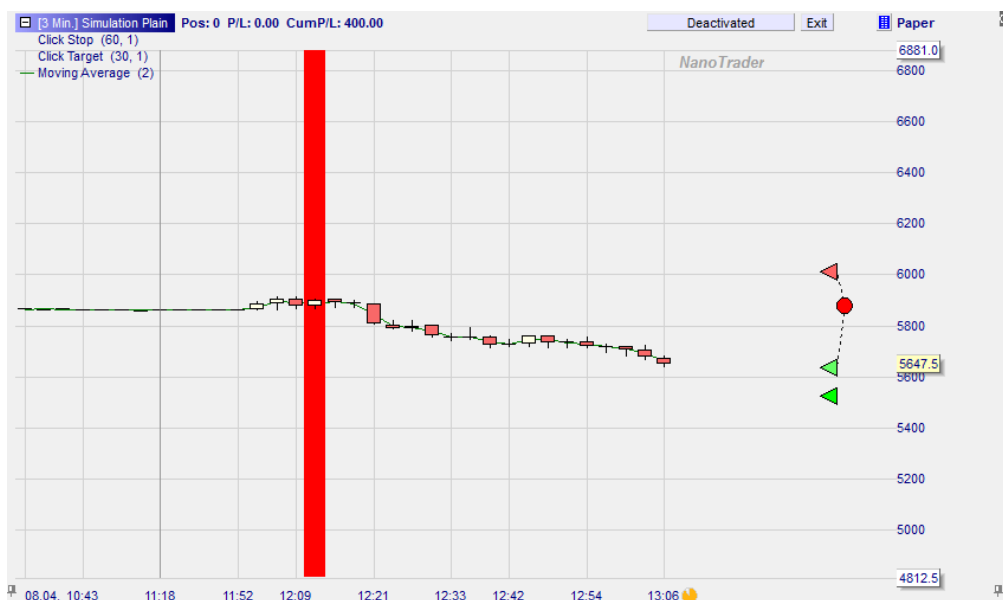
bracket limit sell = light green triangle, bracket stop sell = light red triangle

*Strip 4: long positions*  
green circle

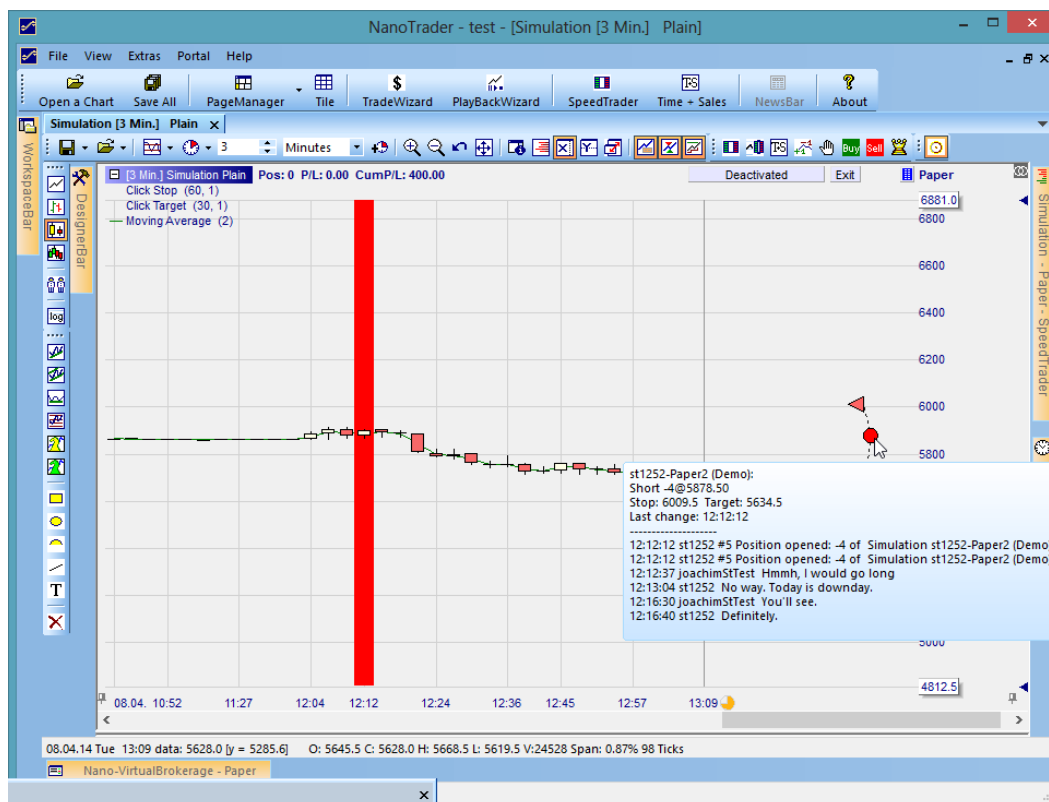
The ordering of the strips ensures that bracket orders are always left of their corresponding positions.

By clicking on one of the shown elements you can highlight all orders and positions from the account the clicked element belongs to. Additionally the period in which the position was opened or modified is highlighted. The period is highlighted in green for long and in red for short positions.

The following screenshot shows a short position and its brackets. The member also placed an additional Limit Buy order to reverse the position.



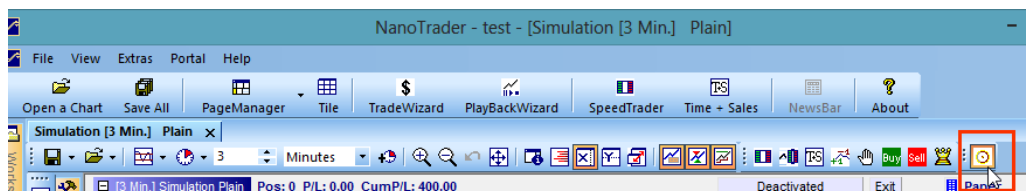
Moving the mouse above one of the circles or triangles will show detailed information about the order/position including the chat and activity history:



The colors user for drawing can be customized in the ColorManager.

## Connecting a Chart to Group Trading rooms

If you want to display Group Trading entries in an already opened chart you can just click the Synergy icon:




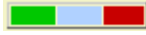










To disconnect from Group Trading rooms just click the icon again. Once connected all changes in all subscribed accounts are automatically reflected in the chart.

## 3.8 Description of available Data Columns

| <b>Column Name</b> | <b>Meaning</b>   |
|--------------------|--|
| Account            | The account the position or order is belonging to.                   |
| Dir                | Long/Short for positions. Order type and additional info for orders. |
| Pos                | Position size/Order volume   |
| Symbol             | The symbol's name. In case you have no access to the data            |

|                     |  |
|---------------------|--|
|                     | source the symbol belongs to any data related to live prices cannot be shown, e.g., P/L.   |
| Price               | Avg. price for positions, trigger price for orders.  |
| Last                | The last price of the symbol received from the exchange.   |
| Stop                | Positions only.<br>The price of the <i>closest</i> stop order for the position. (Note: most often the time this will be a bracket order, but it could also be any manually placed order.)<br>The cell will be highlighted in case the member changed the Stop price.<br>The last change, expressed in ticks, will be shown in parenthesis after the price. This allows to easily spot changes. |
| Target              | Positions only.<br>The price of the <i>closest</i> limit order for the position. (Note: most often this will be a bracket order, but it could also be any manually placed order.)<br>The cell will be highlighted in case the member changed the Limit price.<br>The last change, expressed in ticks, will be shown in parenthesis after the price. This allows to easily spot changes.        |
| P/L                 | The current P/L in the currency of the traded symbol.<br><br>Note that for CFD/Forex trading the P/L is calculated based on the account variant (Micro, Mini, Standard) of your own account and not on that of the person holding the position. This allows to relate the P/L in a given symbol to the amounts you are used to.  |
| P/L perMin          | The P/L per minute.  |
| TicksToGo           | Distance in ticks to the nearest Stop or Target order. If it falls below a threshold defined in the Options then the cell will be highlighted.   |
| %Group              | How many of the subscribed accounts have a position in the symbol? Expressed in percent.   |
| #Longs              | How many of the subscribed accounts are long in the symbol?  |
| #Shorts             | How many of the subscribed accounts are short in the symbol?   |
| LongEvo<br>ShortEvo | Shows the latest evolution of long and short positions. Typically you place the LongEvo column left of the ShortEvo column, like this:   |

|              |   |
|--------------|---|
|              | <div> <div>LongEvo</div> <div>ShortEvo</div> </div>  <p>Each circle represents an action. Whenever a position change in the underlying symbol occurs through any of the subscribed accounts a corresponding new icon is added to both cells. The addition is at the right for the LongEvo cell and at the left for the ShortEvo cell.</p> <p>In the example above an account has increased or opened a long position. Hence an upward pointing arrow was added. Also a "no action" icon is added to the ShortEvo cell.</p>  <p>In this example the last action was decreasing an existing long position, hence a downward pointing arrow in the LongEvo cell.</p> <p>If no action occurs for a certain duration both cells receive a no action item:</p>  <p>The duration as well as the number of action icons can be defined in the Options.</p> |
| #L : #N : #S |  Ratio of long positions to no position to short positions in the underlying symbol.   |
| Facts        | <p>Positions only.</p> <p>This cell displays varies facts about the position:</p>  <p>A circle indicates the size of the position (large, medium, small). Red is used for short positions, green for long positions.</p>  <p>Triangles with a plus/minus sign indicate increasing or decreasing of positions, e.g. increasing a long position, or decreasing a short position.</p>  <p>The first arrow indicates a reversal from a short to a long position; the second arrow a reversal from long to short.</p>  <p>The numbers from left to right denote: #likers, #dislikers, #exits.</p>  |
| RRR          | Risk Reward Ratio. Defined (for long positions) as follows:<br>$\frac{\text{Target} - \text{EntryPrice}}{\text{EntryPrice} - \text{Stop}}$  |
| Range        |  The range indicator gives an instant insight into   |

|           |  |
|-----------|--|
|           | <p>the current status of the trade:<br/> The black triangle denotes the last traded price.<br/> The Target defines the green area.<br/> The Stop defines the red area.<br/> The white vertical line defines the entry price.<br/> Hence, with this single element you see immediately the ratio from target to stop, the potential remaining profit, distance to stop and target, etc.<br/> A trade that has developed very positively and where the Stop has been adjusted, e.g., by a trailing stop, might look like this: </p> |
| Profit    |  Shows the current profit in relation to the remaining profit.  |
| PotProfit | Remaining potential profit, i.e., distance to target.  |
| Hints     |  The hints can be used by the owner of the position of order to signal certain conditions to his group members. In many cases this is much more efficient than writing individual chat messages.<br><br>Click the "Caution" sign to indicate that the trade is experimental and others should not copy it.<br>Choose from the stars menu to rate your own trade.<br>Choose a smiley to signal your mood about your position.<br>Click the parachute to indicate that you will soon close your position or cancel your order.      |
| Likes     | Number of users that like the position/order.  |
| Dislikes  | Number of users that do not like the position/order.   |
| Exits     | Number of users that suggest exiting the position/order.   |
| Chat      | Last chat entry. Click to open Chat Pane and add messages.   |
| Chart     | Click to open chart and highlight clicked element.   |
| Copy      | Open the TradeWizard   |
| Time      | Time of creation or last modification. The cell will be highlighted for a while if its content changed.  |
| Age       | Duration since creation or the last modification in HH:MM:SS.  |
| Origin    | How was the position/order created? Manually, TradeGuard, TacticOrder, etc.  |

### 3.9 Setting Various Options

Click on “Options” to open Options dialog of the Group Trading App.

ST 'DAX-Club' - Group Trading

Subscribable Accounts (2/2) Accounts Positions EntryOrders Chat Activities Publish Columns Options

| Dir.                      | Symbol              | Pos    | Price     | Stop         | Target | P/L    | Range | %Group | #Longs  | #Shorts  |
|---------------------------|---------------------|--------|-----------|--------------|--------|--------|-------|--------|---------|----------|
| Trader: Erik-Paper (Demo) |                     |        |           |              |        |        |       |        |         |          |
| ▼ Short                   | Euro-US Dollar S... | -1     | 1.3180... |              |        | -58.00 |       | 100%   | 0 (0%)  | 2 (100%) |
| Trader: Erik-WHS (Demo)   |                     |        |           |              |        |        |       |        |         |          |
| ▼ Short                   | Euro-US Dollar S... | -1     | 1.3182... |              |        | -30.00 |       | 100%   | 0 (0%)  | 2 (100%) |
| ▶ Enter Long Stop         | Euro-US Dollar S... | 100000 | 1.31880   |              |        |        |       | 100%   | 0 (0%)  | 2 (100%) |
| ▲ Long                    | Germany 30 cash...  | 1      | 9581.30   | 9540.1 (+26) | 9625.8 | 1.30   |       | 50%    | 1 (50%) | 0 (0%)   |
| ↔ Bracket Sell Limit      | Germany 30 cash...  | 1      | 9625.8    |              |        |        |       | 50%    | 1 (50%) | 0 (0%)   |
| ↔ Bracket Sell Stop       | Germany 30 cash...  | 1      | 9540.1    |              |        |        |       | 50%    | 1 (50%) | 0 (0%)   |

When clicking on an option an explanatory text will be displayed below the list.

Options

|  |        |
|--|--------|
| AutoSubscribe to all accounts                      | Yes    |
| Number of action icons in Symbol Evolution colu... | 5      |
| Symbol Evolution duration                          | 30     |
| Highlight position/order changes                   | 30     |
| Highlight new chat entries                         | 30     |
| Highlight new vote entries                         | 30     |
| Highlight new hit count entries                    | 30     |
| Highlight new hint entries                         | 30     |
| Show bracket orders in AccountsView                | Yes    |
| Show icons for orders                              | Yes    |
| TicksToGo highlight distance                       | 25     |
| Show chat  | No     |
| Show group activities                              | No     |
| Show positions in group activities                 | Yes    |
| Show orders in group activities                    | Yes    |
| Show member in/out in group activities             | No     |
| Standardowa lokalizacja dokujaca                   | Bottom |

OK Apply Cancel Load Standard Save as Standard

Click OK to save the options for the given room. When clicking Save as Standard the settings of all options as well as the customized column layout of the views are saved as the new standard setting. The standard setting is used when you enter another room of the same app for the first time. Also you can load the standard layout explicitly to revert from your current settings.